

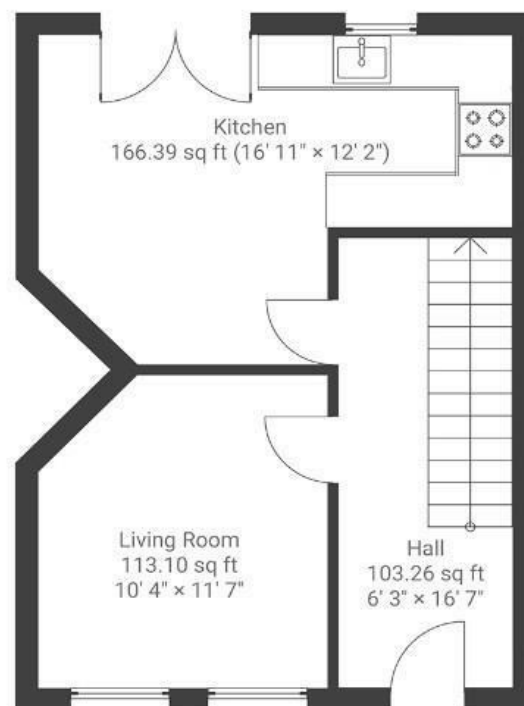
Cotswold Road

BEDMINSTER

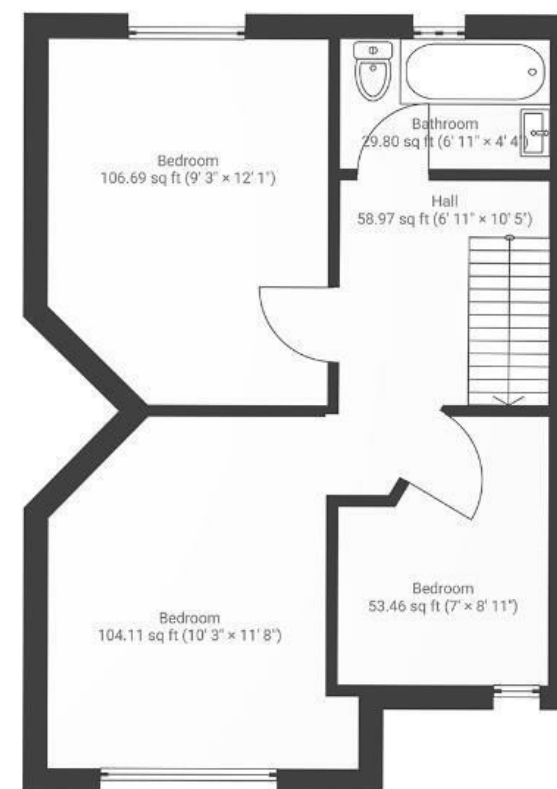
APPROXIMATE FLOOR AREA
76 SQM / 818 SQFT



GROUND FLOOR



FIRST FLOOR



Boardwalk

Cotswold Road , BRISTOL



£425,000



BS3 4PD



3 Bedrooms



1 Bathrooms

"We have absolutely adored living here and turning this house into our beautiful first home. Starting our family here, we have made such special memories in this light filled house that we will cherish forever. Windmill hill is the perfect place to live with such a special community within walking distance to our favourite places in Bristol including Victoria park, the waterfront and north street."

